



ISSN:2330-4456

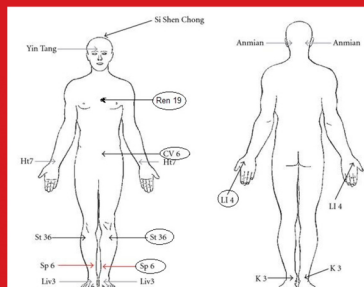
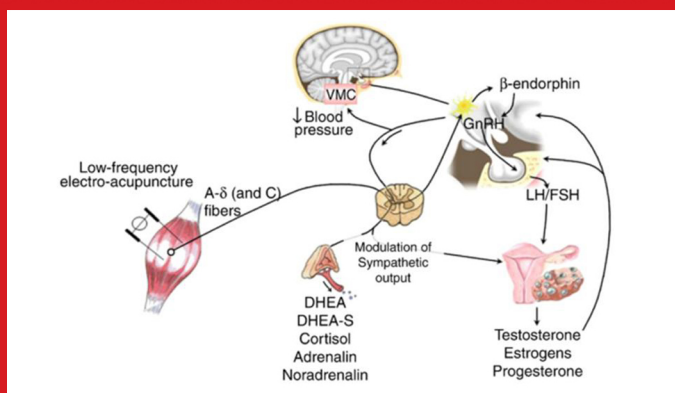
Index in  
Scopus and ISI (WOS)

Vol. 5, No. 1, January 2017

# International Journal of Women's Health and Reproduction Sciences

[www.ijwhr.net](http://www.ijwhr.net)

Publisher: Aras Part Medical International Press Co.



## **Chairman**

**Safa, Alhasani, Ph.D.**

Dept. of Obstetrics and Gynecology ,Universitätsklinikum Schleswig-Holstein Campus Lübeck, Germany.

## **Editors-in-Chief**

**Oktay, Kadayifci, MD.**

Department of Obstetrics and Gynecology, Faculty of Medicine, Cukurova University, Balcali, Adana, Turkey.

Specialty: Obstetrics and Gynecology

**Arash, Khaki, Ph.D.**

Associate Professor in Women Reproductive Health Research Center, Tabriz University of Medical Sciences, Iran.

Active Member in American Society of Andrology (ASA), USA

## **Associate Editors**

**Mohammad Hamadeh, MD.**

1-Dept. of Obstetrics and Gynecology University of Saarland, Homburg, Germany.

2-American Society of Andrology (ASA) Specialty: Reproduction Medicine-IVF.

**Fuqin Liu, Ph.D.**

Texas Woman's University College of Nursing Denton, Texas 76204-5498-USA.(Nursing)

**Elaheh Ouladsahebmadarek, Ph.D.**

Dept. of Obstetrics and Gynecology Tabriz University of Medical Sciences, Tabriz, Iran. (Obstetrics and Gynecology)

Head of Women's Reproductive Health Research Center, Tabriz University of Medical Sciences, Tabriz, Iran.

**Liselotte Mettler, M.D.**

Dept. of Obstetrics and Gynecology, University Clinics of Schleswig Holstein- Kiel, Germany(Gynecologic -Robotic Surgery).

**Mertihan Kurdoglu, M.D.**

Dept. of Obstetrics and Gynecology, Faculty of Medicine, Gazi University, Ankara, Turkey.

**Ahmet Berkiz Turp, MD.**

Dept. of Obstetrics and Gynecology, Gazi University School of Medicine, Ankara Turkey. ( Obstetrics and Gynecology)

**Alireza Farnam, MD.**

Dept. of Psychiatry Tabriz University of Medical Sciences, Tabriz, Iran. (Psychiatry in women health)

**Marefat Ghaffari Novin, MD.**

Dept. of Biology and Anatomical sciences, Shahid Beheshti University of Medical Sciences, Tehran, Iran. (Infertility & IVF)

**Laya Farzadi, MD.**

Dept. of Obstetrics and Gynecology Tabriz University of Medical Sciences, Tabriz, Iran.( Women's and infertility)

**Simin Samani, MD.**

Dept. of Pathology and Laboratory Medicine, College of Medicine, Qazvin University of Medical Science, Qazvin, Iran. (Urogenital Pathology )

**Zhinous Bayatmakoo, MD.**

Dept. of Infectious Disease Tabriz University of Medical Sciences, Tabriz, Iran(Infectious Disease)

Head of Department of Microbiology and Leptospira Reference Laboratory, Razi Vaccine and Serum Research Institute, Karaj- Iran, P.C. 3197619751, Karaj- Iran.

**Hossin Jabari Khamenehie, Ph.D.**

Dept. of Statistics, Faculty of Math., Tabriz University, Tabriz, Iran. (Biostatistics)

**Fatemeh Fallah Rostami, Ph.D.**

Dept. of Undersecretary For Research & Technology, Ministry of Health and Medical .

## **Editor**

**Janice L. Bailey**

Centre de recherche en biologie de la reproduction Université Laval Québec (Québec) Canada.

## **Deputy Editor**

**Zafer, Akan, Ph.D.**

Celal Bayar University, Faculty of Medicine, Dept. of Biophysics Uncubozkoy Manisa-Turkey.

## **Managing Editor**

**Amir Afshin, Khaki, Ph.D.**

Dept. of Obstetrics and Gynecology ,Universitätsklinikum Schleswig-Holstein Campus Lübeck, Lübeck, Germany.

## **Editorial Boards**

**Andrea R. Hagemann,**

Department of Obstetrics and Gynecology, Division of Gynecologic Oncology, Washington University ,School of Medicine in St.Louis,Mo. USA (Gynecologic Oncologist ).

**Michael M. Kamrava, MD.**

Dept. of Obstetrics and Gynecology ,Los Angeles Center for Embryo Implantation, USA.

**Kazim Chohan, Ph.D.**

ART lab director ,SUNY Upstate Medical University, Syracuse, New York, USA.

American Society of Andrology (ASA).

**Fuqin Liu, Ph.D.**

Texas Woman's University College of Nursing Denton, Texas 76204-5498-USA.

**Ismail Guler, MD.**

Dept. of Obstetrics and Gynecology Gazi University School of Medicine, Ankara, Turkey.

**Zehra Kurdoglu, MD.**

Dept. of Obstetrics and Gynecology, Ankara Training and Research Hospital, Ankara, Turkey.

**Seval Tasdemir, MD.**

ART lab director ,Ankara University, Faculty of Medicine, Turkey.

**Fatma Eskicioğlu, MD.**

Dept. of Obstetrics and Gynecology Celal Bayar University School of Medicine, Manisa, Turkey.

**Akif Hakan Kurt, Ph.D.**

Dept. of Pharmacology,Kahramanmaraş Sutcu Imam University, Faculty of Medicine, Kahramanmaraş, Turkey.

**Sara Spiga, Ph.D.**

Dept. of Obstetrics and Gynecology ,University of Cagliari, Italy.

**Seppan Prakash, Ph.D.**

University of Madras - Dept. of Anatomy, Dr. Arcot Lakshmanasamy Mudaliar Postgraduate Institute of Basic Medical Sciences, Chennai, India.

**Pejvak Khaki, Ph.D.**

Head of Department of Microbiology and Leptospira Reference Laboratory, Razi Vaccine and Serum Research Institute, Karaj- Iran, P.C. 3197619751, Karaj- Iran.

**Robabeh Taheripana, MD.**

Research Deputy of Infertility & Reproductive Health Research Center , Shahid Beheshti University of Medical Sciences, Tehran, Iran.

**Soheila Moradi Bidhendi, Ph.D.**

Dept of Microbiology ,Razi Vaccine and Serum Research Institute, karaj- Iran, P.C. 3197619751, karaj- Iran.

**Abbas Aflatoonian, MD.**

Dept. of Obstetrics and Gynecology ,Shahid Sadoughi Medical University, Yazd, Iran.

**Mehri Jafari- Shobeiri, MD.**

Dept. of Obstetrics and Gynecology Tabriz University of Medical Sciences, Tabriz, Iran.

**Parvin Mostafa-Gharabaghi, MD.**

Dept. of Obstetrics and Gynecology Tabriz University of Medical Sciences, Tabriz, Iran.

**Mohammad Hossein Nasr-Esfahani, Ph.D.**

Head of Royan Institute, Isfahan University of Medical Sciences, Isfahan, Iran.

**Mohammad Nouri, Ph.D.**

Dept. of Obstetrics and Gynecology and ART lab director ,Tabriz University of Medical Sciences, Tabriz, Iran.

**Alia Ghasemzadeh, MD.**

Dept. of Obstetrics and Gynecology ,Tabriz University of Medical Sciences, Tabriz, Iran.

**Saghar Kasiri, M.Sc.**

Senior Clinical Embryologist at London Fertility Centre Harley Street, England.

**Mehmet Bilgehan Yüksel, MD.**

Dept. of Urology, Celal Bayar University, Faculty Of Medicine, Manisa , Turkey.

**Safak Tavukcuoglu, Ph.D.**

Ankara University, Faculty of Science, Dept. Biology, Turkey.

**Mohammad Ali Khalili, Ph.D.**

ART lab director & Education deputy of Infertility Center, Research and Clinical Center for Infertility, Shahid Sadoughi University of Medical Sciences, Yazd., Iran.

**Parviz Bazzi, Ph.D.**

Dept. of Anatomy Scientific board in Bushehr University of Medical Sciences, Bushehr, Iran.

**Bushra Ahmad Hamdi, Ph.D.**

Clinical Analysis Dept, Pharmacy College, Hawler Medical University, Kurdistan - Region, Iraq.

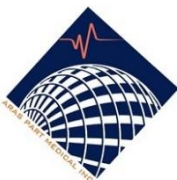
**Maryam Kashanian, MD.**

Dept. of Obstetrics & Gynecology, Iran University of Medical Sciences, Tehran, Iran.

**Founder**

**Prof.Dr. Arash Khaki**

**Publisher**



**Aras Part Medical International Press Co.**

Contact:

Europe: 26 Brunswieker str., kiel 24105 , Germany. Tel :0049-15129447186.

Europe : 45080, Manisa Turkey.

Asia: No 1,Etekali La,South Shariati Street,5138815941.Tabriz Iran. Tel:0098-4135556943.

USA: 5130 yarmouth ave apt 53. Encino,ca 91316 ,USA. Tel:001-818-538-4110.

Email: [publish@pmcaras.com](mailto:publish@pmcaras.com)

**Scientific English Editors**

**Haleh Kosari, MD.**

Avicenna Reproductive Research Institute, Tehran, Iran.

**Rosemarie Noot, Nurse**

Dept. of Scientific Publication and Information Development Center Ministry of Health and Medical Education, Tehran, Iran.

**Language Editors**

**Laleh, Hajhosseini, M.Sc.**

Department of Food and Nutrition Science, San Jose State University, CA, USA.

**Mehrang Faezeh Ph.D.**

University of Auckland, Auckland, New Zealand.



**Khanahmadi, Sharareh, MD.**

Centro Escholar University, Manila, School of Dentistry, Philippines.

### **Journal Expert**

**Amir Mahdi, Imani, MD.**

Faculty of Medicine, Islamic Azad University, Sari Branch, Sari, Iran.

### **Technical Editor**

**Hafez Mohammadhassanzadeh, M.Sc.**

### **Production Manager**

**Reza Khosravi, M.Sc.**

### **Page Designer**

**Filiz Aksünger, M.Sc.**

Marmara University, Dept. of Chemistry, Turkey.

## **Aim and scope:**

International Journal of Women's Health and Reproduction Sciences, is an open access (E-ISSN: 2330-4456), peer-reviewed scientific research journal that provides rapid publication of articles in all fields of women's health and reproduction science on the basis of its originality, importance, interdisciplinary interest, timeliness, accessibility, elegance and surprising conclusions. All submissions to the IJWHR undergo a fair, supportive and completely blind peer-review process and our acceptance rate is about 43 %. International Journal of Women's Health and Reproduction Sciences is published 4 times per year on January, April, July, October in each seasons first month and its publication language is English. The editorial boards' aims at reviewing the submitted articles as fast as possible and promptly include them in the forthcoming issues. International Journal of Women's Health and Reproduction Sciences is scientific journal of Women's Reproductive Health Research Center of Tabriz University of Medical Sciences, Iran (<http://wrhrc-en.tbzmed.ac.ir/>). This center has the agreement and approval number from Iranian Ministry of Health since (2009.12.14). International Journal of Women's Health and Reproduction Sciences has approved by Iranian Ministry of Health and Medical Education Journals Commission [http://www.ijwhr.net/images/index\\_images/yeniler/ imj.JPG](http://www.ijwhr.net/images/index_images/yeniler/ imj.JPG) IJWHR supports the Open Access initiative. Abstracts and full texts (PDF format) of all articles published by IJWHR are freely accessible to everyone immediately upon publication. This journal is licensed under a Creative Commons Attribution License. We are member of the ICMJE and follow the Uniform Requirements for Manuscripts Submitted to Biomedical Journals, issued by International Committee for Medical Journal Editors (ICMJE), as well as the Committee on Publication Ethics (COPE) code of conduct for editors.

The "International Journal of Women's Health and Reproduction Sciences" is a modern forum for scientific communication. Data and information, useful to investigators in any discipline in women health and reproduction sciences, in basic and medical clinical sciences, mainly including:

- Medical Education in Women Health and Reproduction Sciences
- Cardiology in Women Health Related Reproductive Problems
- Sports Medicine in Women Health and Reproduction Sciences
- Psychiatry in Women Health Related Reproductive Problems
- Antioxidant Therapy in Reproduction Medicine Sciences
- Nutrition in Women Health and Reproduction Sciences
- Defense Androgen and Estrogen
- Fertility and Infertility
- Urogynecology
- Endometriosis
- Endocrinology
- Breast Cancer
- Menopause
- Puberty
- Eroticism
- Pregnancy

- Preterm Birth
- Vaginal Diseases
- Sex-Based Biology
- Surgical Procedures
- Nursing in Pregnancy
- Obstetrics/Gynecology
- Polycystic Ovary Syndrome
- Hyperandrogenism in Females
- Menstrual Syndrome and Complications
- Oncology of Female Reproductive Organs
- Traditional Medicine in Women Reproductive Health
- Ultrasound in Women Health Reproduction sciences
- Stem Cell Research In Women Reproduction Sciences
- Complementary Medicine in Women Reproductive Health
- Female Sexual Dysfunction: Pathophysiology & Treatment

Will be published after they have been peer reviewed. This will also include reviews and multidisciplinary research.

## Instructions for Authors

### A. General Policy:

Manuscripts, or the essence of their content, must be previously unpublished and should not be under simultaneous consideration by another Journal. The authors should also declare if any similar work has been submitted to or published by another Journal. By virtue of the submitted manuscript, the corresponding author acknowledges that all the co-authors have seen and approved the final version of the manuscript. The corresponding author should provide all co-authors with information regarding the manuscript, and obtain their approval before submitting any revisions. Manuscripts are only accepted for publication on the understanding that the authors will permit editorial amendments, though proofs will always be submitted to the corresponding author before being sent finally to press. Prior to the initial submission of a new manuscript, please carefully consider that all authors' names are included as no change to authors' details will be permitted after the acceptance. The decision to accept a contribution rests with the Editorial Board of the IJWHR.

Manuscripts will be considered for publication in the form of original articles, Case report, short communications, Letter to editor and review articles. The work should be original or a thorough by an authoritative person in a pertinent field.

### B. Manuscript Preparation :

Manuscripts should be prepared in accordance with the "Uniform Requirements for Manuscripts Submission to Biomedical Journals" proclaimed by the International Committee of Medical Journal Editors ([www.icmje.org](http://www.icmje.org)).

#### 1. Cover letter

**a** - A statement that the manuscript has been read and approved by all the authors.

**b** - That the requirements for authorship have been met for all the authors, based on the criteria stated by ICMJE.

**c** - Approval of all the authors regarding the order in which their names have appeared.

**d** - That each author confirms the manuscript represents honest work.

**e** - The name, address, and telephone number of the corresponding author who is responsible for communicating with other authors about revisions and final approval.

**f** - The letter should give any additional information that may be helpful to the editor, such as the type or format of the article. If the manuscript has been submitted previously to another journal or in another language, it is helpful to include the previous editor's and reviewers' comments with the submitted manuscript, along with the authors' responses to those comments. Submitting previous evaluatory review of another journal accelerates the review process.

**g** - For accepted manuscripts, the authors are requested to fill and sign the journal's cover letter to express their consent for its publication.

**h** - To reproduce published material, to use illustrations or tables or report information about identifiable people, the author should submit a copy of the permission with the manuscript to the journal.

## **2. Top Ethic Committee Approval**

Inclusion of the approval letter from the relevant Ethics Committee or Institution's Review Board regarding the research protocol and the rights of the subjects (if applicable to the study)

## **3. Top Consent Form**

Attach a copy of the consent form to the letter, if applicable. Consent forms would be evaluated by the Ethics Committee and then signed by the participant.

## **4. Top RCT or NCT Registration**

Emailing the letter denoting registration of RCTs or NCTs in domestic or international databases (The trial's registration number needs to be mentioned, too).

5. Manuscripts submitted in English, must be type written, double-spaced, on good quality A4 paper, or paper of similar format. Authors are requested to reserve margins of at least 2.5cm all around the paper. Original drawings of photos, tables and figures should be furnished together with the manuscripts.

6. Manuscripts should be kept to a minimum length and should be subdivided into labeled sections (Title page, Abstract, Keywords, Introduction, Materials and Methods, Results, Discussion, Conclusion, Acknowledgement, and References).

7. A title page is to be provided and should include the title of the article, authors' names with full first name (with degrees), authors' affiliation, suggested running title and corresponding author. The affiliation should comprise the department, institution (usually university or company), city and state (or nation). The suggested running title should be less than 50 characters (including spaces) and should comprise the article title or an abbreviated version thereof. For office purposes, the title page should include the name and complete mailing address, telephone and fax number, and email of the one author designated to review proofs.

8. An abstract no longer than 250 words for reviews and research articles is to be provided as the second page. Abstract should be structured as objective(s) (including purpose setting), materials and methods, results, and conclusion.

9. A list of 3-8 keywords, chosen from the Medical Subject Headings (MeSH) list <http://www.nlm.nih.gov/mesh/MBrowser.html>, is to be provided directly below the abstract. Keywords should express the precise content of the manuscript, as they are used for indexing purposes. Provide abbreviations and nomenclature list in an alphabetical order and non-standard abbreviations contained in the manuscript (excluding references) with definitions after the keywords. Use abbreviations sparingly and only when necessary to save space, and to avoid repeating long chemical names or therapeutic regimes. In a figure or table, define the abbreviations used in a footnote.

10. Tables in limited numbers should be self-explanatory, clearly arranged, and supplemental to the text. The captions should be placed above.

11. Figures should be utilized only if they augment understandability of the text. The captions should be placed below. Drawings and graphs should be professionally prepared in deep black and submitted as glossy, black and white clean Photostats. Professionally designed computer generated graphs with a minimum of 300 DPI laser printer output is preferable. Color photographs are welcomed.

12. The same data should not be presented in tables, figures and text, simultaneously.

13. References in limited numbers and up-to-dated must be numbered consecutively in order of citation in the text (number in parentheses). Periodical titles should be abbreviated according to the PubMed Journals Database (<http://www.ncbi.nlm.nih.gov/entrez/query.fcgi?db=journals>). Print surnames and initials of all authors when there are six or less. In the case of seven or more authors, the names of the first six authors followed by et al. should be listed.

Please Put Your Article References in IJWHR EndNote System Before Submitting.

1. Algar WR, Krull UJ. Toward a multiplexed solid-phase nucleic acid hybridization assay using quantum dots as donors in fluorescence resonance energy transfer. *Anal Chem* 2009; 81: 4113-20. doi: 10.1021/ac900421p

2. Ansary MM, Ishihara S, Oka A, Kusunoki R, Oshima N, Yuki T, et al. Apoptotic Cells Ameliorate Chronic Intestinal Inflammation by Enhancing Regulatory B-cell Function. *Inflamm Bowel Dis* 2014. doi: 10.1097/mib.0000000000000240
3. Bagalkot V, Zhang L, Levy-Nissenbaum E, Jon S, Kantoff PW, Langer R, et al. Quantum dot-aptamer conjugates for synchronous cancer imaging, therapy, and sensing of drug delivery based on bi-fluorescence resonance energy transfer. *Nano Lett* 2007; 7: 3065-70. doi: 10.1021/nl071546n.
4. Bailey VJ, Easwaran H, Zhang Y, Griffiths E, Belinsky SA, Herman JG, et al. MS-qFRET: a quantum dot-based method for analysis of DNA methylation. *Genome Res* 2009; 19: 1455-61. doi: 10.1101/gr.088831.108

#### **TYPE OF ARTICLES:**

Type of articles are based on PubMed definitions. For more info please refer to: <http://dtd.nlm.nih.gov/publishing/tag-library/3.0/n-w2d0.html>

#### **Editorial :**

Editorial is Opinion piece, policy statement, or general commentary, typically written by staff of the publication (The similar value "article-commentary" is reserved for a commentary on a specific article or articles, which is written by an author with a contrasting position, not an editor or other publication staff.)

#### **Letters to the Editor about a recent journal article :**

Letters referring to a recent article in this journal must be received within three months of its publication. For example, a letter referring to an article published in the January issue must be submitted online no later than March 31st. Letters submitted after the allowed time will not be considered.

The text, not including references, must not exceed 700 words. A maximum of three authors and 10 references are allowed. Neither tables nor figures are allowed.

#### **Letters to the Editor NOT referring to a recent journal article :**

Original research that is of interest but does not fulfill all the requirements needed for publication as a full-length manuscript can be submitted as a letter to the editor. The letter must have a title and a maximum of three authors.

The text, not including references, tables, figures or legends must not exceed 700 words. No more than 10 references and either one table or one figure are allowed.

Word Count Limit: Letters should contain 500 - 700 words, maximum number of references is 10, maximum Number of illustrations/Tables is 1.

#### **Original :**

The content of the paper must justify its length. For reports of original investigative work, traditional division into sections is required: Title, Keywords, Addresses and which author address for correspondence, Structured abstract, Background, Objectives, Materials/Patients and Methods, Results, Discussion, References and Acknowledgements, Legends for display items (Figures and Tables).

Research articles should contain 2500 - 3500 words, maximum number of references is 55, maximum Number of illustrations/Tables is 5.

#### **Review Article :**

Review Articles should contain 3500 - 4000 words, maximum number of references is 80, maximum number of illustrations/Tables is 5. In a review article both abstract and text of the manuscript, include following items:

- 1) Context: Include 1 or 2 sentences describing the clinical question or issue and its importance in clinical practice or public health.
- 2) Evidence Acquisition: Describe the data sources used, including the search strategies, years searched, and other sources of material, such as subsequent reference searches of retrieved articles. Explain the methods used for quality assessment and the inclusion of identified articles.
- 3) Results: Address the major findings of the review of the clinical issue or topic in an evidence-based, objective, and balanced fashion, emphasizing the highest-quality evidence available.
- 4) Conclusions: Clearly state the conclusions to answer the questions posed if applicable, basing the conclusions on available evidence, and emphasize how clinicians should apply current knowledge.



## **CASE REPORT :**

A case report is a case study, case report, or other description of a case that should contain 1500 - 2000 words with a structured abstract of 200 words maximum. Case reports should comprise sections of Introduction, Case Presentation, and Conclusions in Abstract and Introduction, Case Presentation, and Discussion in full text with not more than 2 tables or figures and up to 20 references.

## **Technical Notes :**

Technical note is a brief description of a specific technique, procedure, modification of a technique, or new equipment of interest to women's reproductive sciences. It should include a brief Introduction followed by Technique section for case reports or Materials and methods section for case series. Discussion is limited to the specific message, including the uses of the technique, equipment or software.

Literature reviews and lengthy descriptions of cases are not appropriate. It should be written in 1500 words with 2 tables and 3 figures or 6 images and up to 8 references.

## **Brief Report :**

Brief Reports should contain 1000 - 2000 words with a structured abstract of 200 words maximum. Short reports should comprise sections of Background, Objectives, Materials & Methods, Results and Discussion with not more than 2 tables or figures and up to 20 references.

## **Short Communication :**

Short Communication, follow the instructions for original articles, except that the total word number of the main text (excluding references, tables and figure legends) is limited to 2000 with no more than 2 figures and/or tables and no more than 15 references. An abstract, not exceeding 150 words, should be presented at the beginning of the article.

## **News :**

News should contain 1000 - 2000 words with a structured abstract of 200 words maximum. News should comprise sections of Background, Objectives, Materials & Methods, Results and Discussion with not more than 2 tables or figures and up to 20 references.

## **Submission and Review Process :**

Manuscripts must be written in English (use consistently either British or American spelling) and must be submitted online. To submit, go to <http://ijwhr.net/submit/login>. Full instructions for submission are detailed on this website.

## **C. General Consideration:**

**1. Peer review process:** All submissions will be reviewed anonymously by at least three independent referees. All manuscripts will be acknowledged upon presenting to the Journal office, provided that all stated requirements are met. Authors are encouraged to suggest names of three expert reviewers, but selection remains a prerogative of the Editor. The whole review process depends on receiving referees' comments and revising the manuscripts based on these comments to the author. On receipt of the revised article from the author, and after final approving by referees, the letter of acceptance is issued to the author. Authors have the right to communicate to the editor if they do not wish their manuscript to be reviewed by a particular reviewer because of potential conflicts of interest. No article is rejected unless negative comments are received from at least two reviewers.

**2. Conflicts of interest:** Authors should disclose, at the time of submission, information on financial conflicts of interest or other interests that may influence the manuscript. Authors should declare sources of funding for the work undertaken.

**3. The Journal's Policy on Plagiarism:** Any practice of plagiarism will not be tolerated by the journal regarding submitted manuscripts. Non-identifiable quoted segments of articles or close paraphrases from other author/s or even submitting the author's previously published work are known as the act of plagiarism by this journal unless proper use of quotations or paraphrasing with decent citation or referencing are in place. Heavy use of one or a couple of articles is discouraged, even if paraphrased fully. Adversent practice of plagiarism will abort reviewing process or later submission to this journal. All submitted articles will be evaluated by iThenticate software to be cross-checked for plagiarism and to improve publication quality.



**4. Ethical consent:** All submitted articles involving human experiments should be performed only in accordance with the ethical standards provided by the responsible committee of the institution and in accordance with the Declaration of Helsinki (as revised in Edinburgh 2000), available at <http://www.wma.net/en/30publications/10policies/b3/index.html>. Papers describing animal experiments can be accepted for publication only if the experiment conforms the National Institute of Health Guide (National Institute of Health Publications No. 80-23, Revised 1978) for the care and use of Laboratory Animals for experimental procedure. Authors must provide a full description of their anesthetics and surgical procedures. All manuscripts reporting the results of experimental investigations involving human subjects should include a statement confirming the informed consent was obtained from each subject or subject's guardian. All animal or human studies should be used after approval of the experimental protocol by a local ethics committee

**5. Acknowledgements:** Contributors: In acknowledgement section, name people for their contributions or their permission to reproduce their published material, to use their illustrations or provide information about them- try to fully name people who have helped from the conception of the idea to adoption of the hypothesis, to finalization of the study, etc., earnestly. Statement of financial support: Aside from the title page, state any financial or other relationships that might lead to a conflict of interest.

**6. Copyright:** <http://ijwhr.net/submit/copyrightform.pdf>

**7. Disposal of material:** Once published, all copies of the manuscript, correspondence and artwork will be held for 6 months before disposal.

**8.** This journal is licensed under a Creative Commons Attribution License.

**9.** Once a manuscript is accepted for publication it will be provided with a registered DOI number following the acceptance decision. Manuscripts accepted for publication by the IJWHR will be published as ahead of print articles prior to the printing date of their scheduled issue. Corresponding author will be provided with a PDF Proof by the publisher once the production process of an accepted manuscript is over.

#### **10. Publication Fee:**

A non-refundable charge of (110 USD ) for each accepted manuscript must be paid by the author(s) to International Journal of Women's Health and Reproduction Sciences by PayPal method, invoice will send for each accepted manuscript to correspondences author.

**11.** should the authors need any technical assistance for English edit of your manuscript, they can contact the head of English edit section at: [language@ijwhr.net](mailto:language@ijwhr.net)

### **The Peer-Review System, Policy and Confidentiality**

An essential part of any publication process is the peer-review process. In this process the reviewers not only give their scientific view on an article, but also recommend points for improving the quality of the article. In this way the submitted articles are refined to such an extent that are published as a logical and scientifically approved article in a journal. As a general view; it is the responsibility of the journals to offer an effective peer-review system. The aims of the IJWHR for peer-reviewing are of high standard and quality. Peer-review process selects papers of significant scientific interest. IJWHR expects referees to not only confirm the novelty of a manuscript but also to identify the bad features and mistakes. In addition, reviewers are encouraged to suggest points for improving the submitted article. Detection of fraud and plagiarism is of utmost significance to the editors of IJWHR. However, the editors do not expect reviewers to identify carefully hidden ideas and intentions of deceptions in a submitted manuscript. Whenever needed the submitted manuscripts are written once again. Through a team work the submitted manuscript is not only evaluated scientifically, its grammar, language and literature are also assessed. The goal of the IJWHR is to publish a well written, scientifically approved manuscript which is of value for the scientific community and society.

As a peer-review policy, all reviewers are requested to keep the submitted manuscripts and any associated data confidential. However if a reviewer seeks advice while assessing a manuscript, he/she must ensure that confidentiality is maintained and that the names of any such colleagues must be provided to the journal as soon as possible. IJWHR makes its utmost effort to keep the content of all submitted manuscripts confidential until they are published. Although the aim of the journal is to maintain referees' confidentiality in regard to the submitted article, it is not responsible for the conduct

of reviewers. Peer review is defined as obtaining advice on individual manuscripts from reviewers experts in the field who are not part of the IJWHR editorial staff.

IJWHR accepts manuscripts report novel findings, which could result in impacts on in all fields of women's health and reproduction science based on its originality, importance, interdisciplinary interest, timeliness, accessibility, elegance and surprising conclusions. Hence, it offers an exceptionally fast publication schedule including prompt peer-review by the experts in the field and immediate publication upon acceptance. Quality and topic of submitted manuscript beside the priority of research field are the least considered criteria in each manuscript before entering in formal review process. Any type of submissions containing scientific information necessitates review process to ensure content quality.

### **Editorial Review and Publication**

1- IJWHR's authors will be sent notifications/Code of the manuscript's receipt and editorial decisions by email. During the peer-reviewing process, authors can check the status of their manuscript via the Online Manuscript Submission System.

2- All submissions to the IJWHR go through a double-blind peer-review process to ensure content quality. At the first stage, a technical editor checks format and style of manuscript to assure its compatibility with the IJWHR guide for authors. If authors have not considered the guides, the manuscript will be sent back to authors for compatibility.

3- The manuscript will be then assigned to section editors and bio-statistician editors based on the subject area and editor-in-chief decision, for a fast pre-review screening within 1 week. Section editors check the manuscript for content quality (with a focus on methodology, originality, statically and contribution to knowledge and practice) and use of English, for prohibit of plagiarism and improve language quality article will evaluate by iThenticate belonged to Cross check as IJWHR is a member of cross check.

The decision at this stage is fast reject, revise and re-submit, or assign to external reviewers for detailed evaluation process. Selection of external reviewers is based on their scientific background and experience, previous works, authors' suggestion, and expertise.

4- Every attempt is made at the IJWHR to obtain at least 2-3 strong reviews on each manuscript.

5- Editor-in-Chief receives the reviewers' comments and sends them along with decision letter to corresponding author.

IJWHR adheres to a double-blind peer-review process that is rapid, fair, and ensures the high quality of published articles. IJWHR reviewers are required to declare their conflict of interests and maintain the confidentiality about the manuscripts they review.

As IJWHR is a rapid response journal, the review process takes between 2 to 6 months.

Managing editor receives the reviewers' comments and sends them along with decision letter to corresponding author. Final decision on each manuscript will be made by the assigned editor of the manuscript. As ijwhr is a rapid response journal, so this process takes not more than three weeks. Decision letter determines the status of manuscript in five ways:

1. Acceptance: The manuscript could be ePublished. This process lasts two weeks. Before ePublication, corresponding author could verify a proof copy of the paper. After ePublication, paper will be in a queue to be published in one of ijwhr upcoming issues.

2. Minor revision: Authors will receive comments upon their manuscript, at which point the authors will be asked to submit a revised copy beside cover letter showing authors' rejoinders, and also a marked copy utilizing Track Changes in Review menu of Microsoft Word Documents. Revised manuscript should be submitted in one month after decision letter. Unless, authors need to go through a resubmission process.

3. Major revision: It means a chance to reorganize the manuscript to meet the required scientific criteria for another review process. Authors should pay more attention to reviewers' comments and focus on their highlighted points. Editor may/may not request the authors to resubmit their revised manuscript beside cover letter and a marked copy. Revised manuscript should be submitted in one month after decision letter. Otherwise, authors need to go through a resubmission process.

4. Rejection: In most cases, methodological and scientific concerns are the main origins of rejection. Causes of rejection will be sent to the authors to provide more chance for them for publication in other journals.

5. Withdraw: if the manuscript does not meet the scopes of ijwhr, it will be withdrawn with suggestion to be sent to another journal.

#### **Editing**

Accepted manuscripts will be edited according to the IJWHR Guide for Authors (this does not include language editing) and returned to the corresponding author for final approval. All contributing authors are responsible for all statements made in their manuscript during editing and production that are authorized by the corresponding author.

#### **Corrections**

Requests for publishing corrections should be sent to the editorial office. Corrections will be reviewed by editors and are published immediately.

#### **Proofs:**

The corresponding author will receive an e-mail alert containing a link to a web site. A working e-mail address must therefore be provided for the corresponding author. The proof can be downloaded as a PDF (portable document format) file from this site. Acrobat Reader will be required in order to read this file. This software can be downloaded (free of charge) from the following web site: <http://www.adobe.com/products/acrobat/readstep2.html>. This will enable the file to be opened, read on screen and printed out in order for any corrections to be added. Further instructions will be sent with the proof. Authors will be charged for any major changes against the manuscript, and excessive changes may be disallowed.

If a significant amount of new material is added, the paper may be rereviewed by the Editors and re-dated. Second proofs will be sent only if justifiably requested by the author. Final proofs are read by the Editorial Office and – only in problematic cases - by the Editors.

#### **Author Material Archive Policy :**

Unless specifically requested, IJWHR will dispose of all electronic material submitted four months after publication. If you require return of any material submitted, please inform the Editorial Office of IJWHR or Production Editor on submission.



**Arash Khaki (Ph.D) Editor-in-Chief & Founder**  
**International Journal of Women's Health and Reproductive Sciences**

**Tel: + 90-236-2011000/213**

**Fax: + 90-236-2372442**

**Email: [editorial@ijwhr.net](mailto:editorial@ijwhr.net)**